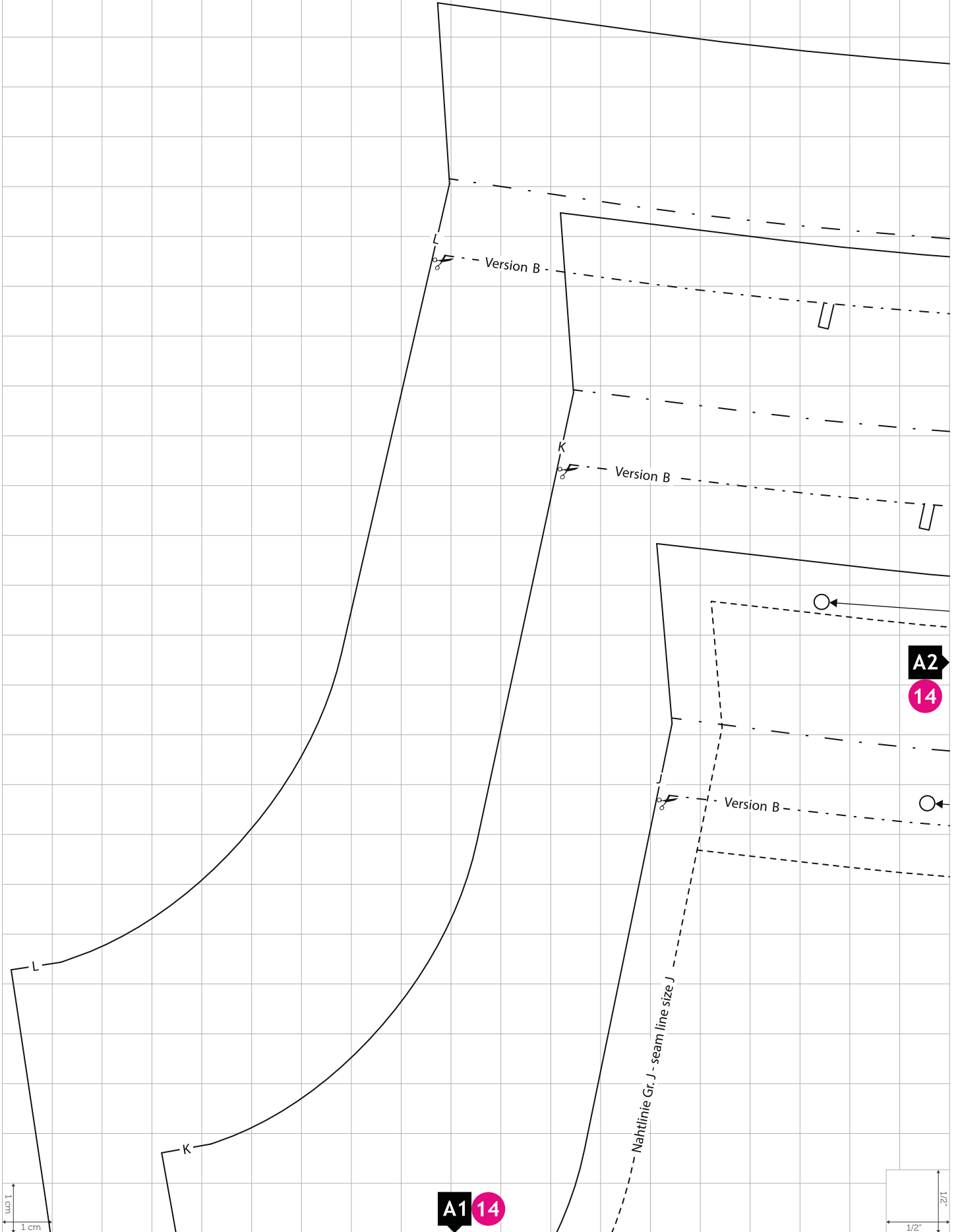
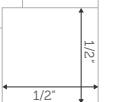


KINDERHOSE/KIDS' TROUSERS „ROBIN“



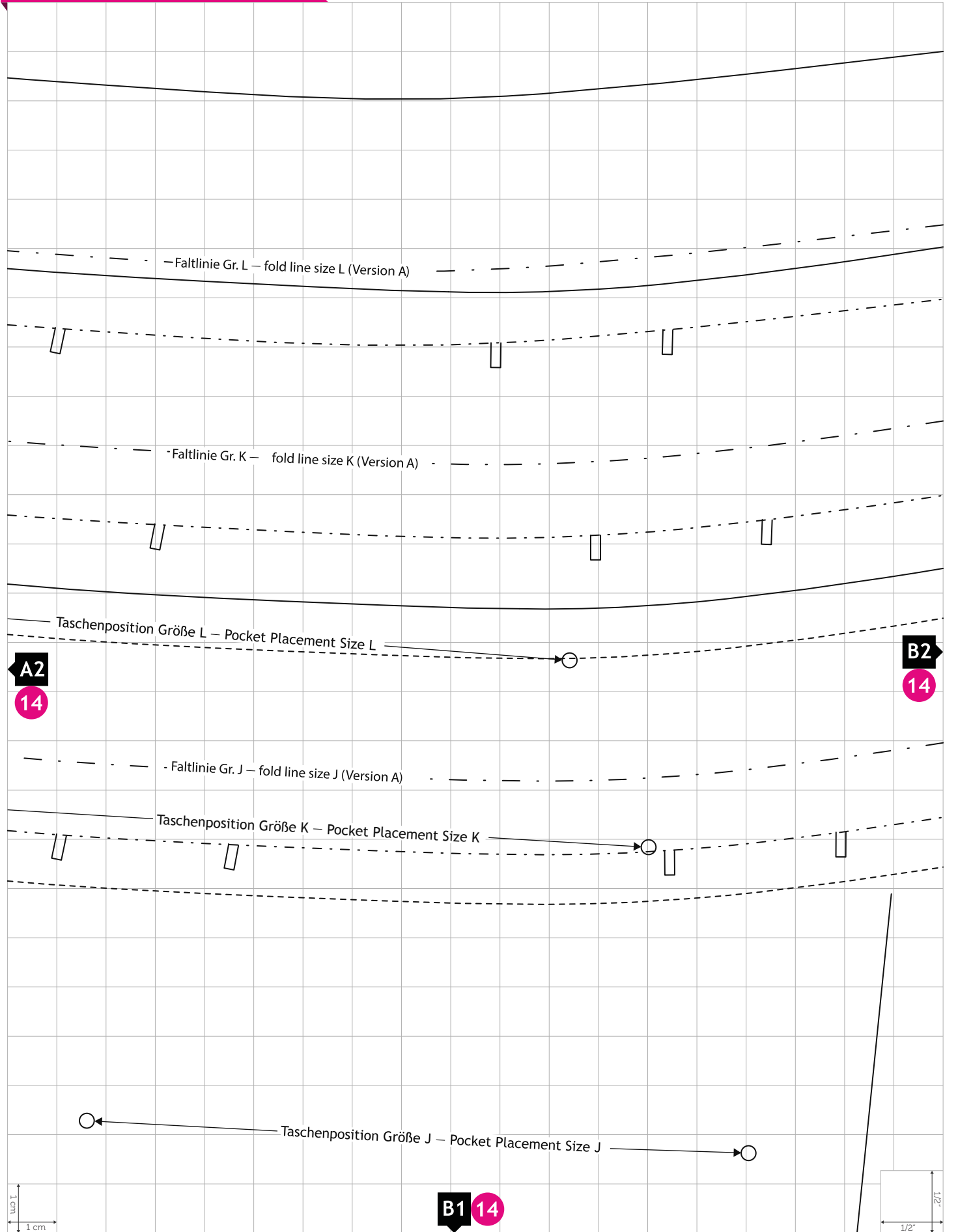
Größenkontrolle

A1 14



test square
V1.0

KINDERHOSE/KIDS' TROUSERS „ROBIN“



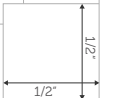
A2

14

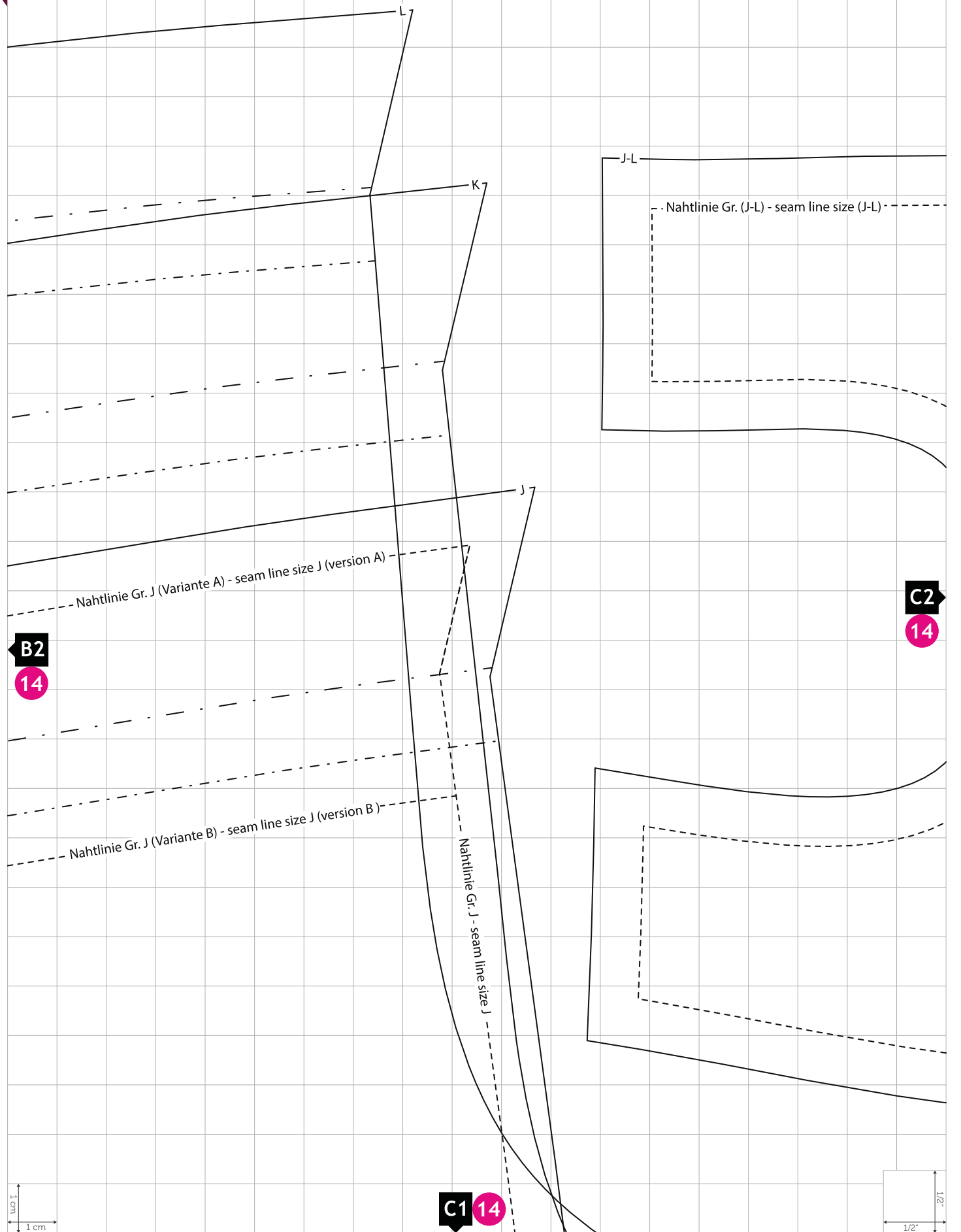
B2

14

B1 14



KINDERHOSE/KIDS' TROUSERS „ROBIN“



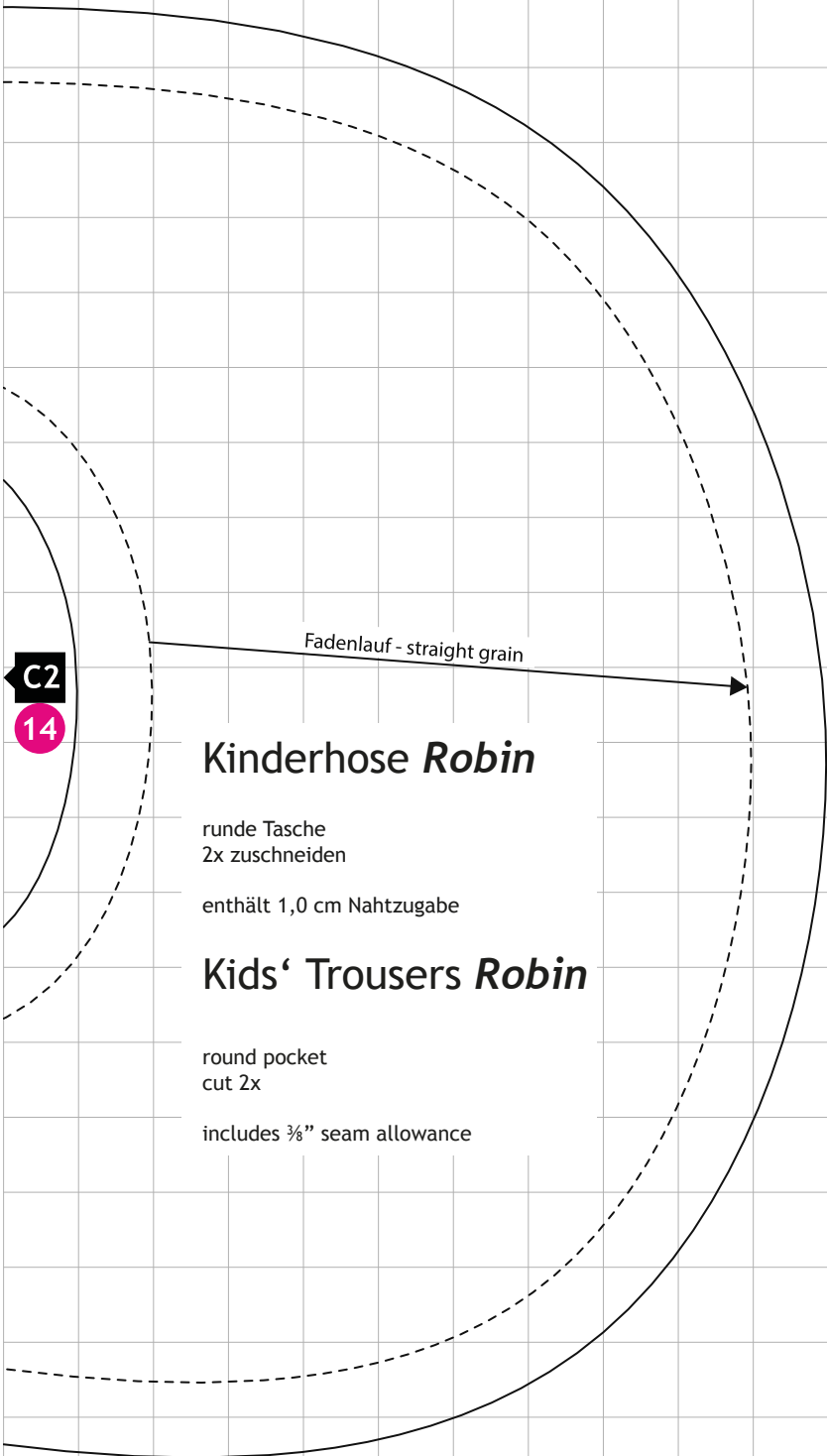
B2
14

C2
14

C1 14

Größenkontrolle

test square
V1.0



Fadenlauf - straight grain

C2

14

Kinderhose *Robin*

runde Tasche
2x zuschneiden

enthält 1,0 cm Nahtzugabe

Kids' Trousers *Robin*

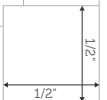
round pocket
cut 2x

includes 3/8" seam allowance



Größenkontrolle

D1 14



test square

V1.0

KINDERHOSE/KIDS' TROUSERS „ROBIN“

A1 14

Shorts

K

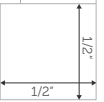
Shorts

Shorts

G2 14



G1 14



B1 14

Kinderhose *Robin*

Hosenbein (Shorts, $\frac{3}{4}$, lang)
1 Paar (links & rechts) zuschneiden

enthält 1,0 cm Nahtzugabe und 2,0 cm Saumzugabe

Variante A: angeschnittener Bund (enthält 3,5 cm Bundzugabe)
Variante B: angesetzter Bund, an der Schnittlinie abschneiden

Kids' Trousers *Robin*

pants (shorts, $\frac{3}{4}$ length, long)
cut 1 pair (left & right)

includes $\frac{3}{8}$ " seam allowance and $\frac{3}{4}$ " hem allowance

version A: notched hemband (1 $\frac{1}{2}$ " seam allowance along the waistband)
version B: joined hemband, cut along the cutting line

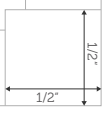
Fadenlauf - straight grain

H2
14

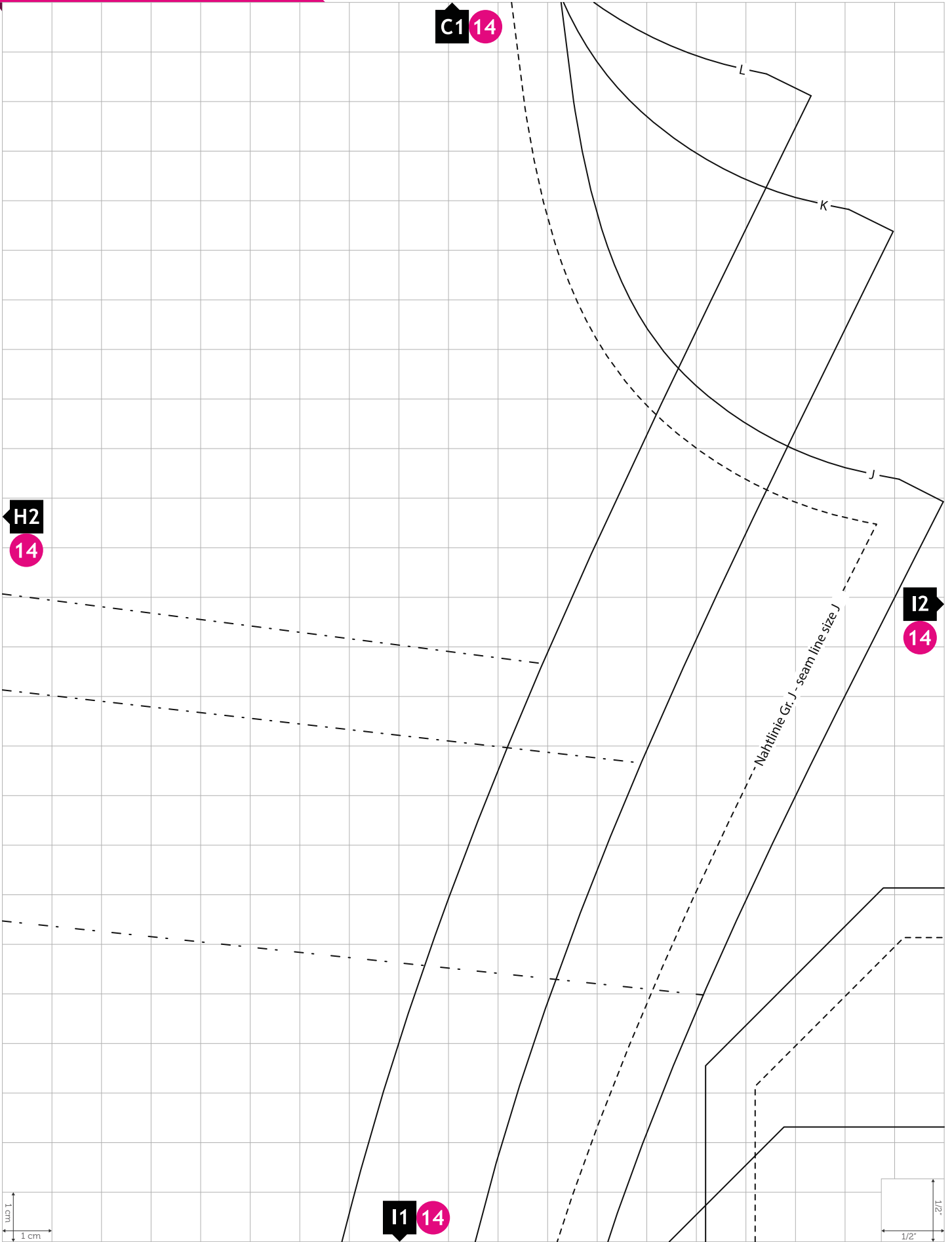
G2
14

Größen / Sizes	J	K	L
GRÖÖE/BODY HEIGHT IN CM	104	110	116
BODY HEIGHT IN FT' INCH"	3' 5"	3' 7"	3' 10"
ENGLISH/AMERICAN SIZE (APPROX.)	4-5 years	5 years	5-6 years

H1 14



KINDERHOSE/KIDS' TROUSERS „ROBIN“



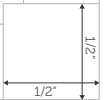
C1 14

H2 14

I2 14

I1 14

Nahtlinie Gr. J. - seam line size J

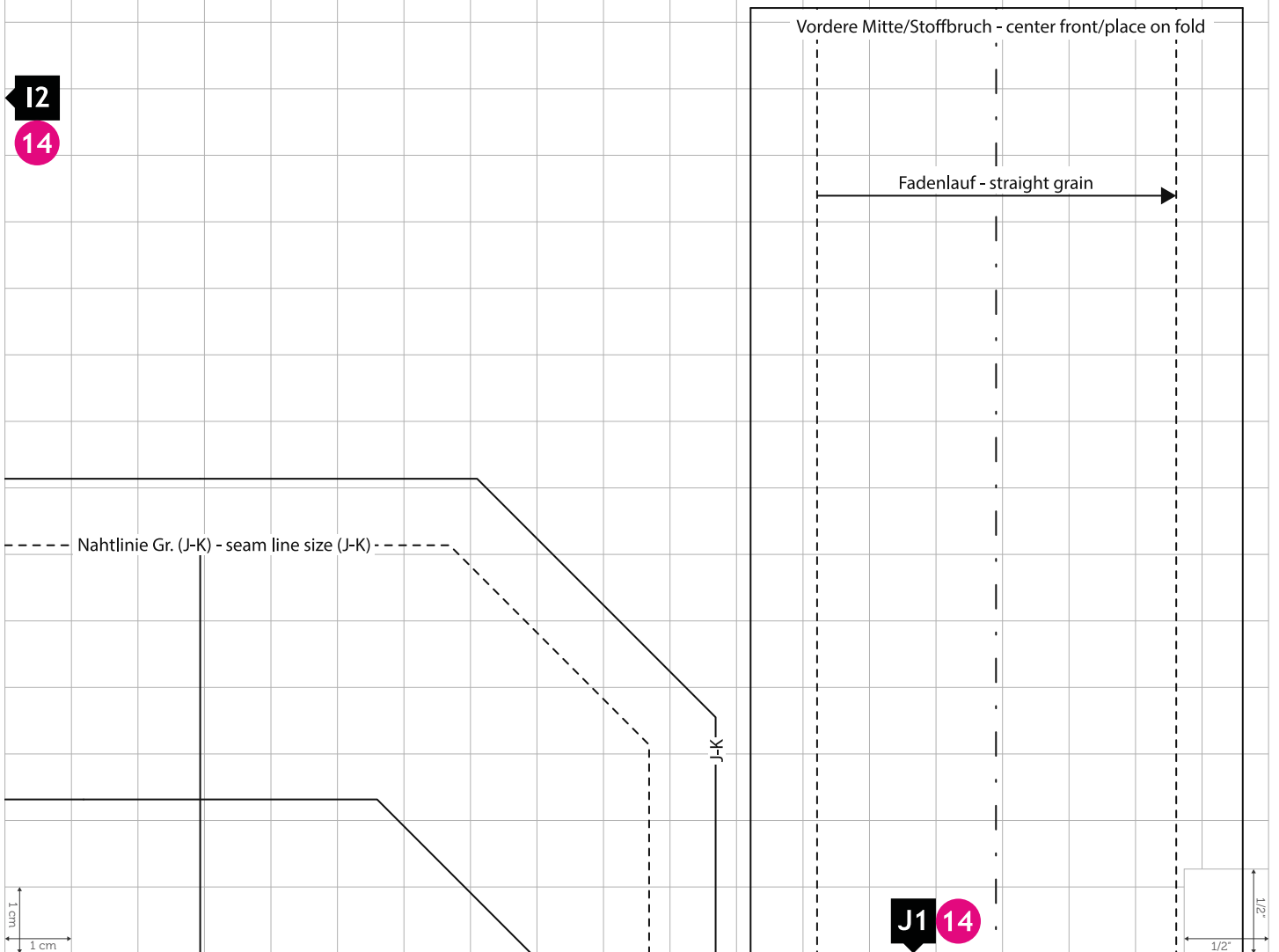


D1 14

Größen / Sizes	J	K	L
GRÖÖE/BODY HEIGHT IN CM	104	110	116
BODY HEIGHT IN FT' INCH"	3' 5"	3' 7"	3' 10"
ENGLISH/AMERICAN SIZE (APPROX.)	4-5 years	5 years	5-6 years

I2

14



J1 14

KINDERHOSE/KIDS' TROUSERS „ROBIN“

G1 14

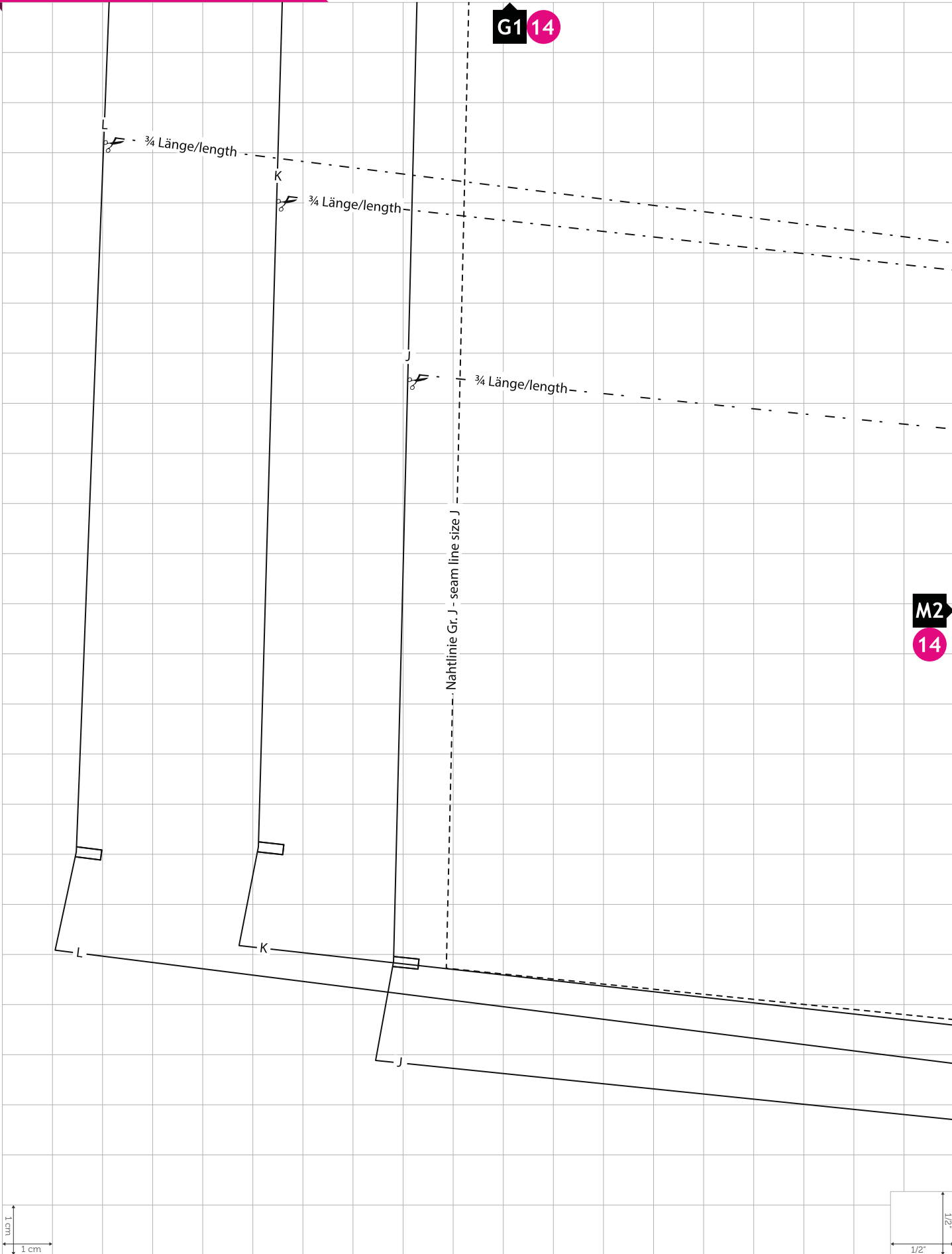
M2 14



Größenkontrolle

test square

V1.0

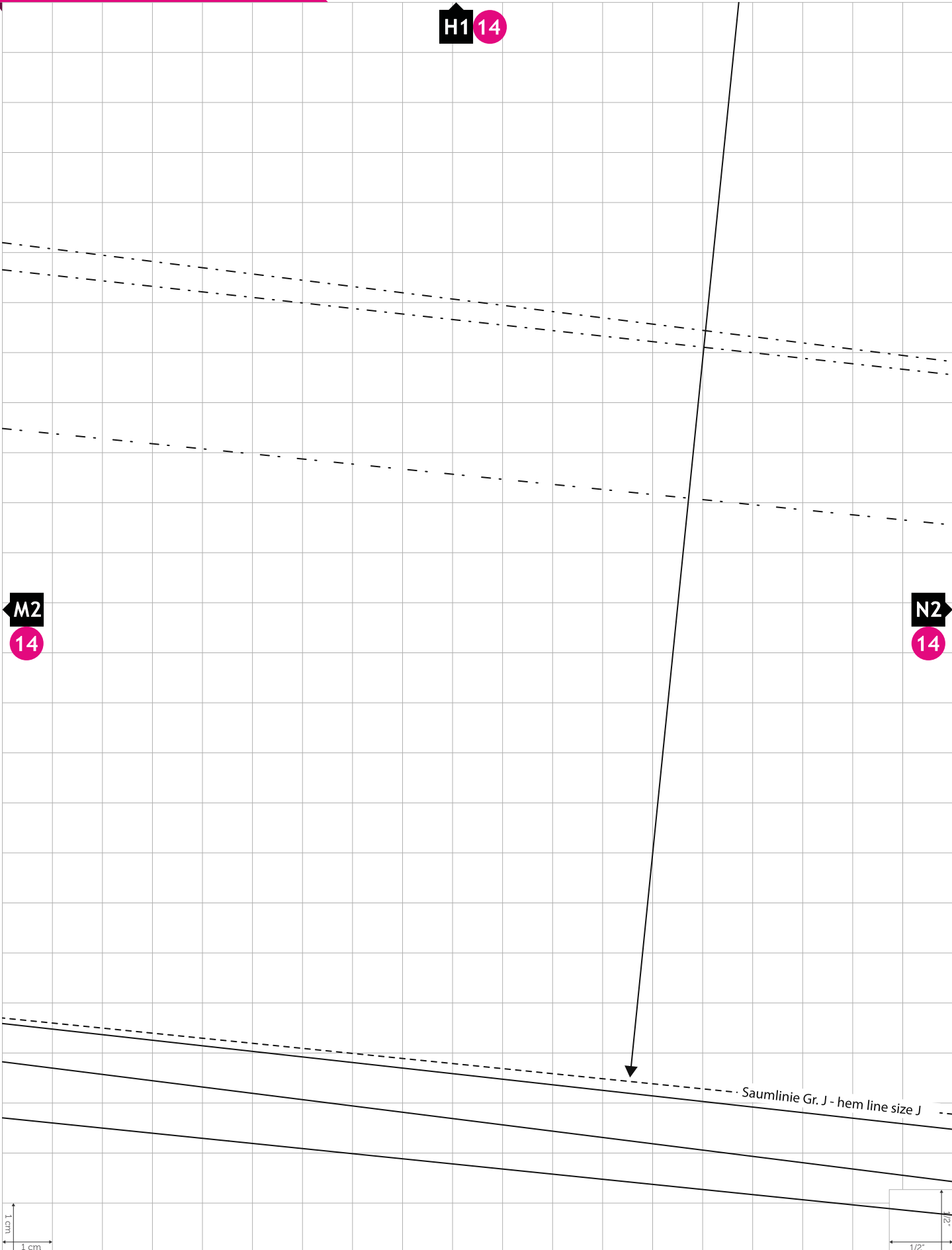


KINDERHOSE/KIDS' TROUSERS „ROBIN“

H1 14

M2 14

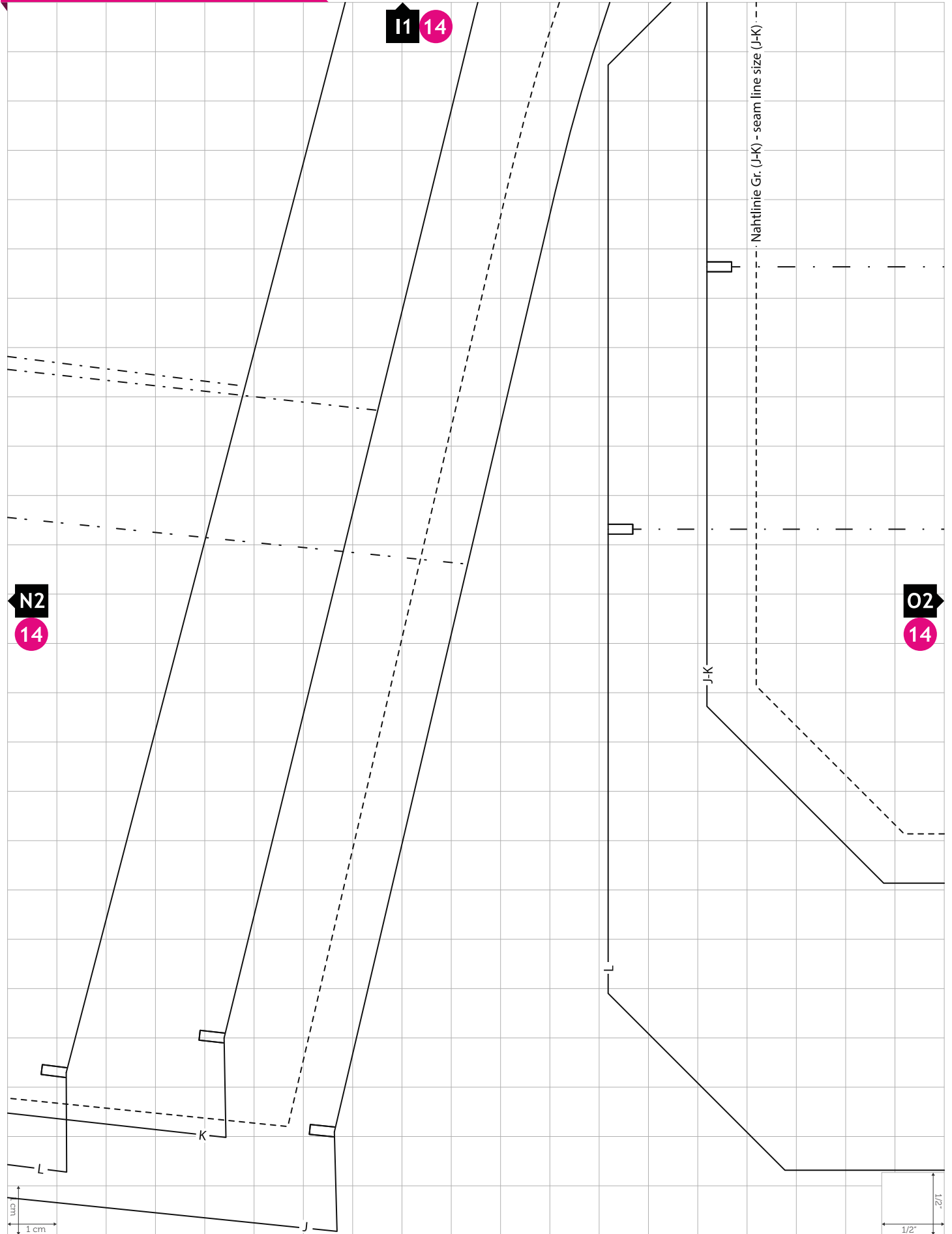
N2 14



Größenkontrolle

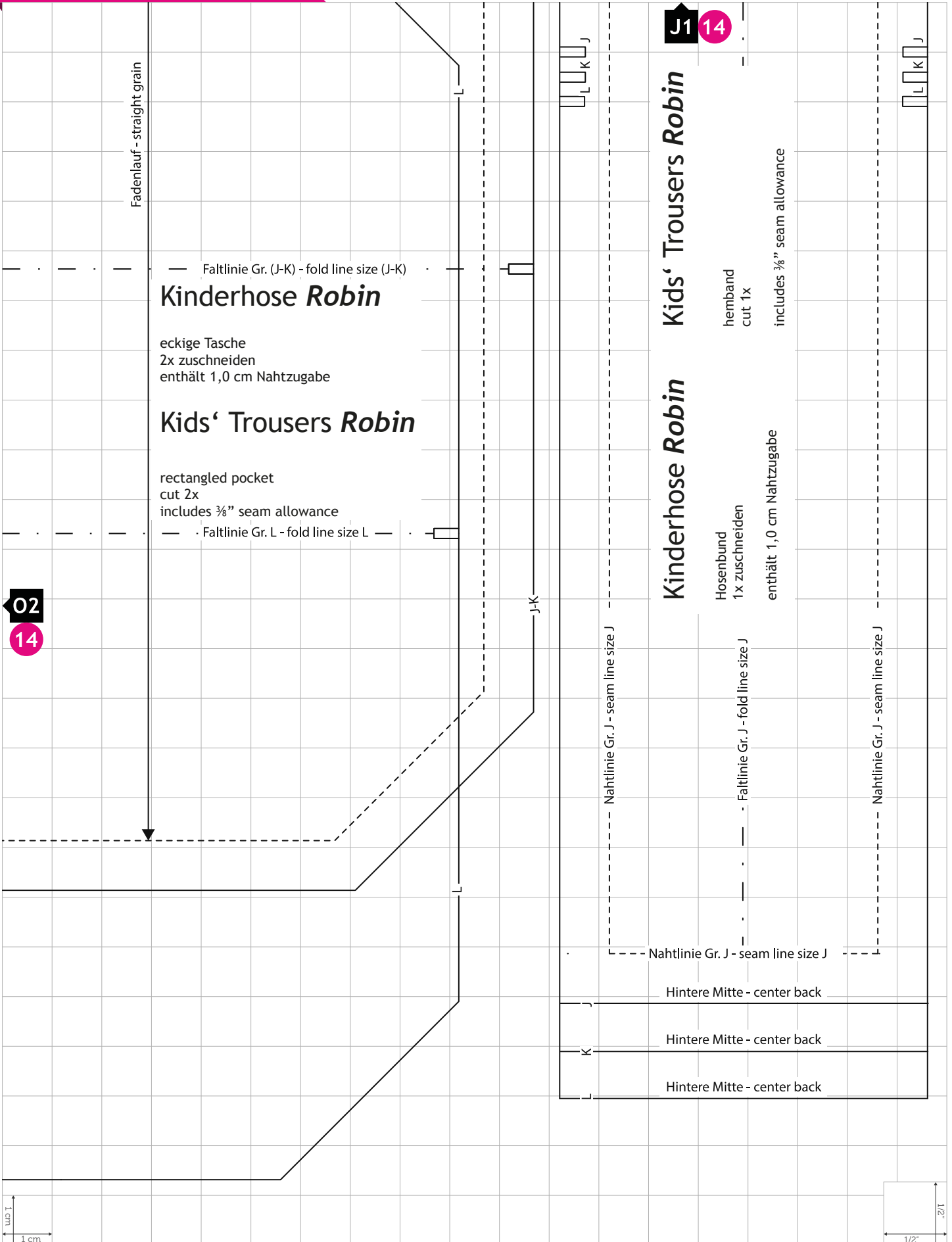
test square
V1.0

KINDERHOSE/KIDS' TROUSERS „ROBIN“



Größenkontrolle

test square
V1.0



02

14

5

14

Kids' Trousers Robin

Kinderhose Robin

hemband
cut 1x

includes 3/8" seam allowance

Hosenbund
1x zuschneiden

enthält 1,0 cm Nahtzugabe

Nahtlinie Gr. J - seam line size J

Faltlinie Gr. J - fold line size J

Nahtlinie Gr. J - seam line size J

Nahtlinie Gr. J - seam line size J

Hintere Mitte - center back

Hintere Mitte - center back

Hintere Mitte - center back

